

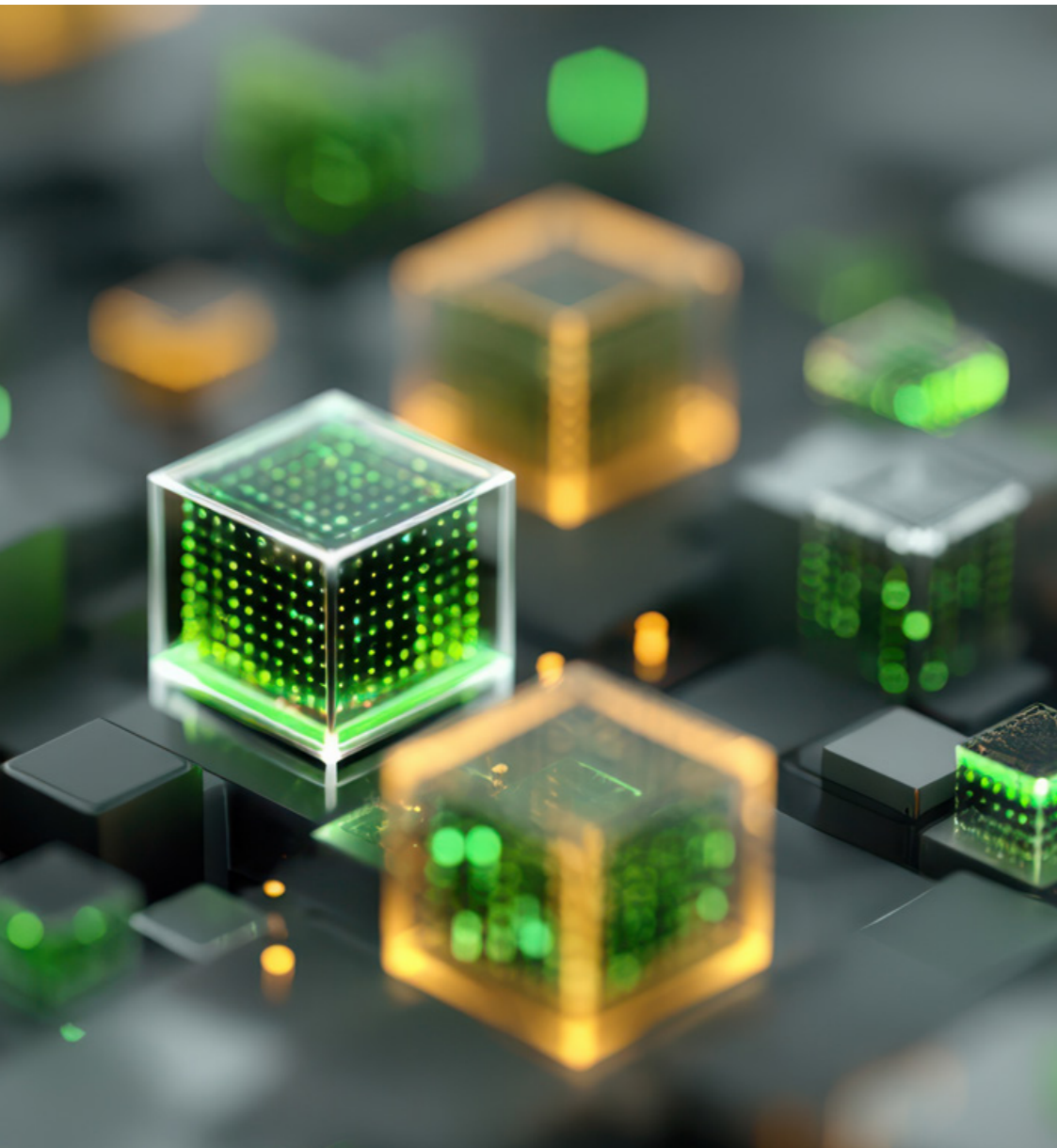


Is Composable Information Management Right for You?

A Digitech Systems, LLC eBook



Executive Summary



Composable technology is an emerging innovation in how we buy technology.

Composable products offer a collection of related but independent feature bundles (or microservices) that are activated and de-activated based on your business needs. Why is this becoming the preferred way to buy technology? Reports show that most companies who buy traditional software and cloud services end up not using 80% of the features they are paying for.¹ Rather than committing to a large, all-in-one system where many tools go unused, composable tech allows you to add or discontinue capabilities as your needs change. Composable products are easier to learn and understand, and they typically cost less as you're only billed for the capabilities you use. This is why we created Sys.tm®, the world's only composable intelligent information management platform.

Sys.tm helps businesses centralize and secure information, reduce manual work, and streamline processes, driving efficiency across various industries, including healthcare, education, financial services, human resources, and more. It includes not only secure information management and collaboration but also process automation or workflow (Sys.tm® Flows), task automation or Robotic Process Automation (Sys.tm® Automations), and Artificial Intelligence (AI) driven data and document recognition as well as content generation (Sys.tm® Intelligence). It offers a wide array of information related technologies within one simple, composable platform. For the first time, companies can build an information management tech stack that exactly meets their needs and budget.

Through its innovative approach to intelligent information management and composable technology, Digitech Systems is helping businesses worldwide stay competitive in a rapidly evolving business landscape. By adopting composable technology like Sys.tm, organizations can unlock new opportunities for growth and profitability.

1: Retrieved from: [Pendo, "The 2019 Feature Adoption Report," 2019](#)

What is Composable Technology?

The Composable Technology Market is Growing

Analysts forecast that the global cloud-based microservices market will grow from \$1.84 billion in 2024 to \$8.06 billion by 2032, reflecting a CAGR of 20.3% as adoption expands beyond early enterprise use cases.²

- Fortune Business Insights



Composable technologies are built on a microservices architecture where applications are built as a collection of loosely coupled, self-contained services. Each service encompasses a single need (sometimes just one task and sometimes a handful of related capabilities), such as user login, payment processing, or data analytics. Composable technologies open new flexibility in the tools we use at work., because organizations assemble and adjust their technology stack using independent features rather than a traditional all-in-one software license or cloud-services tier.

²: Retrieved from: [Fortune Business Insights. \(2025\). Cloud Microservices Market Size, Share & Industry Analysis](#)

What is Composable Technology?

"Composable architecture isn't just about infrastructure; it's a mindset shift. It's about saying goodbye to one-size-fits-all and hello to build-what-you-need. It empowers people across the organization, not just IT, to participate in innovation."³ ~ Value Innovation Labs



Composable technology also enables microtransactions-based billing, which tailors the cost of technology to how much a particular service or feature gets used by the consumer. As an example, a finance team might start with basic document storage and later enable AI-driven invoice processing during peak periods to automatically extract data and speed approvals, then scale that capability back when volumes drop, paying only for what they used.

The emergence of these products is just beginning, so analysts are still unsettled on how to refer to these breakthrough products. Other terms they use to describe this idea may include flexible consumption, consumption-as-a-service, and even micro frontends.

3: Retrieved from: <https://valueinnovationlabs.com/blog/digital-transformation/why-composable-architecture-will-lead-digital-transformation-in-2025/>

Why Does Composability Matter?

"Composable architecture provides the ability to future-proof business by enabling rapid integration of new technologies with minimal disruption. Because composable systems are modular and API-driven, enterprises can quickly adopt innovations, swap out outdated components, and scale up or down as needed without major downtime."⁴

~ Anusha Nerella, State Street Corporation

Composable technology is gaining momentum as organizations look for software models that can keep pace with constant change. AI has been a significant driver for composable technology's expansion. Increased demand for automation and practical AI, especially in areas like invoice processing, approvals, and compliance, has made microservices architectures more attractive because advanced capabilities can be turned on without major architectural changes.

4: Retrieved from: <https://www.forbes.com/councils/forbestechcouncil/2025/07/22/20-hidden-benefits-of-composable-architecture-in-enterprise-tech/>

Why Does Composability Matter?

"Organizations adopting composability outpace the competition by 80% in the speed of new feature implementation, meaning users receive improvements much faster."⁵

~ Publicis Sapient



Composable technology is particularly well suited for organizations that manage document-centric processes or operate in regulated environments. Common customers include finance and accounts payable teams dealing with fluctuating invoice volumes, HR departments managing onboarding and employee records, healthcare and financial services organizations focused on security and compliance, and growing businesses that need to scale operations without locking into enterprise-only pricing. Across industries, composable platforms help solve problems related to manual work, slow processes, scattered information, and misaligned technology costs making them an increasingly popular choice for modern, adaptive organizations.

5: Retrieved from: <https://www.publicissapient.com/content/dam/ps-reinvent/us/en/2025/05/insights-lp/composable-technology-modernization/docs/Composable-Approach-to-Technology-Modernization.pdf>

How Does Composable Technology Benefit Companies?

Real Customer, Real Results: Sys.tm® Speeds Projects by 60-70%

New Mexico-based Nube Group offers scanning services and office equipment to clients in education and local government. Their customer satisfaction and profitability hinge on speedy project completion. The AI-enabled text recognition within Sys.tm® Intelligence complements their scanning services by automatically extracting metadata. Not only has Sys.tm sped projects, it is also reducing manual effort and staff fatigue.

"...it brings automation into our workflows. Sys.tm cut indexing time by more than 60% while also giving clients secure, direct access to their records. Plus, Sys.tm is affordable!"⁶

~Becca Cronin, Director of RID Services, Nube Group



The flexibility of composable technologies is unique, and it offers remarkable benefits to organizations in today's era of rapid change. Composable technology makes businesses more responsive to changes in their marketplace by:

- Allowing organizations to switch capabilities on and off to control costs and match changing needs.
- Enabling companies to add the most innovative technology tools more quickly through a flexible architecture.
- Accessing similar capabilities side-by-side so they can choose the version that best suits their needs. For example, Sys.tm includes an AI clearinghouse with more than two dozen Generative AI (GenAI) engines, and customers can view prompt results together to easily spot the best content.
- Scaling costs and processing power along with usage to complete jobs quickly and better match technology costs to what they actually used during a billing period.

⁶: Retrieved from: Nube Group Reduces Staff Fatigue and Speeds Projects with Sys.tm (2026). Retrieved from: <https://cdn.digitechsystems.com/wp-content/uploads/Nube-Group-Case-Study.pdf>

Key Business Benefits of Composable Technology

Real Customer, Real Results: IBPI Leverages New Tech to Better Serve Members

Office industry buying group IBPI uses Sys.tm to securely manage and access their business records from any location and to automate invoice processing, improving transparency and efficiency. Sys.tm's unique flexibility enabled them to customize workflows, projects, and even dashboards to exactly suit the needs of their executive team, and training took less than one hour. They also leverage the AI service, Sys.tm® Intelligence, to recognize documents and extract important information automatically, streamlining processes and improving data accuracy.

"Sys.tm® has made our processes incredibly efficient. Thanks to Sys.tm's automation and AI...what used to take days now takes minutes. Sys.tm has allowed us to focus more on our members and less on administration."⁷

~ Mark Grice, Executive Director, IBPI



Curious if composable technology can be used by your company? We built Sys.tm as a composable technology with the ability to scale to fit organizations of any size, from small teams to large enterprises, without forcing them into oversized or inflexible systems. Its modular design allows companies to start with only the capabilities they need—such as basic document management or simple automation—and add more advanced services like AI extraction or workflow as their business grows. Smaller organizations benefit by avoiding enterprise-level costs and complexity, while larger companies gain the flexibility to customize solutions for different departments, use cases, or regions.

Key Business Benefits of Composable Technology #1

"Composable architectures allow organizations to assemble and reassemble business capabilities like building blocks, fostering a level of adaptability previously unattainable."⁸ ~ IBM



Innovation Moves Faster:

Microservices architectures make technologies more flexible. Development companies can more quickly and easily plug in the most innovative technologies, making them instantly available to their customers within an already familiar product interface. Consumers turn these features on when they're ready, gaining access to the competitive advantage of being early adopters. Best of all, features can be turned on, adjusted, or retired over time. Composable technology adapts alongside the business, making it practical and cost-effective regardless of company size.



Key Business Benefits of Composable Technology #2

“Composable and even modular technology architecture has the ability to drastically decrease spend, time and resources in the long run, but that can only happen if business leaders understand it and see its value.”⁹ ~ Publicis Sapient



Technology Costs Stay Under Control

In traditional software and cloud services, organizations are forced to buy, deploy, and maintain complete products and large tiers of features, many of which go unused. Significant waste is associated with the cost of licensing, infrastructure, and support. Composable technology reduces waste by replacing “all-or-nothing” software with a modular structure that makes all capabilities instantly accessible without a purchasing cycle. These products eliminate waste by breaking functionality into independent services that can be turned on individually, scaled precisely, and shut off when they are no longer needed, preventing both feature sprawl and unnecessary spend. Composable systems also enable usage-based billing, which matches the cost of a capability to how much it gets used.

Key Business Benefits of Composable Technology #2

Just How Much Could Composable Save You?

"Let's assume the company has a fairly typical RPA project. They want to look up thousands of items in a giant spreadsheet, match them to information in a database, and use the database to add new information to the spreadsheet. In total, their project will take 720 hours (one month, assuming work continues 24 hours a day)."

Estimated Cost and Timeframe:

- **Human Effort:** \$20,000, 4 months
- **Traditional RPA:** approx. \$10,000 (one bot license), 1 month
- **Composable RPA:** pennies per hour, less than one day¹⁰

~ Workflow OTG



Technology Costs Stay Under Control

Workflow Magazine offers an example of how composable RPA changes both the timeframe and cost for a typical project. Rather than relying on a human or a bot to perform routine tasks, composable technologies can line up as much processing power as you might need to complete the project more quickly and cost effectively than other options. Best of all, they do not accrue ongoing costs to the organization between projects.

10: Retrieved from: Christina Robbins (September 2023). "The Flexible Future Office." *Workflow Magazine*. Retrieved from: <https://workflowotg.com/the-flexible-future-office/>

Key Business Benefits of Composable Technology #3

"Digitech Systems, for example, built modular workflow components long before microservices became mainstream, demonstrating that automation could scale flexibly without the weight of rigid platforms. What once looked ahead of its time has quietly become the default architecture for operational efficiency."¹¹

~ Rethinking The Future



Technology Scales Instantly

Composable technology scales up or down rapidly changing how organizations expand their work capacity. As described by *Rethinking the Future*, the real constraint on growth is no longer people, but the friction created when information must be manually identified, routed, reconciled, and delegated. Composable technologies, built on microservices architectures, remove that friction by allowing information to move automatically through workflows: documents are structured when they arrive, data gets extracted and validated automatically, approvals are triggered, and next steps execute without human intervention.



Key Business Benefits of Composable Technology #3

"Composable architecture shortens time to value. You can pilot new tech, iterate product improvements and optimize features without overhauling the entire stack. This flexibility means faster proof of value, continuous delivery and reduced risk when swapping in better-fit tools or capabilities."¹²

~ Karen Kim, Human Managed



Technology Scales Instantly

Because these composable services scale independently and can be turned on only when needed, organizations can handle higher volumes—more invoices, more customers, more cases, more transactions—without hiring more staff. The result is stable payroll costs but increased revenue, equaling more profit.

What Business Types Can Benefit from Composable Technology?



It is our belief that composable technologies are on their way to becoming the preferred way to buy business technologies, much like cloud services have almost entirely replaced software licenses. As such, all businesses can benefit from composable. We've highlighted a few examples below:

Healthcare



Healthcare organizations use composable technology to securely manage patient records, automate intake and referrals, and apply AI for document classification or data extraction whenever needed. Healthcare professionals can spend less time on repetitive administrative tasks and more time on patient care and other high-value work.

Financial Services and AP Departments



In financial services and Accounts Payable, employees rely on composable platforms to simplify multi-step information processes like invoice processing. AI-enabled document and text recognition extract invoice details for verification and process automation routes invoices through approvals. The result is faster processing resulting in more early payment discounts.

Education



Institutions use composable platforms to manage student records, enrollment documents, and administrative approvals. Schools using composable technologies effortlessly handle seasonal surges, such as admissions, final term grading and financial aid processing, without investing in permanent system upgrades.

Human Resources



Composable technology supports onboarding, employee file management, and approvals by activating document classification, workflow automation, or background check integrations as needed. This modularity helps HR teams handle hiring spikes and policy changes quickly without overhauling core technologies.

"Built on a microservices model, Sys.tm® is the first platform of its kind to bring flexible, pay-per-use technology to the ECM space, making advanced information management accessible to businesses of all sizes."¹³

-TechBullion



Digitech Systems: Leading the Way with Composable Technology



Sys.tm is an AI powered platform built on a microservices architecture that unifies intelligent information management with automation and usage-based billing. This combination is what turns composable technology from concept into a powerful platform that gives any business a day to day advantage.

Core Capabilities Include:

- Composable – Enable only the capabilities you need; turn them off when you don't. This is the engine behind Sys.tm's utility and cost alignment.
- Usage Based / Microtransactions-based Billing – Match costs to how much you use features like process automation and AI; a pay for what you use model that replaces one-size-fits-all tiers.
- Intelligent Information Management – Securely store, organize, and access business information from anywhere, while enabling collaboration with internal and external stakeholders.
- Process Automation (Sys.tm® Flows) – Compose rules-driven routing, user tasks, and decision logic to streamline processes.
- AI (Sys.tm® Intelligence) – Apply AI-based document and text recognition and GenAI content creation to accelerate knowledge work.
- RPA (Sys.tm® Automations) – Automate repetitive, time-consuming manual tasks with Robotic Process Automation (RPA) bots.

The result is flexibility and control: since Sys.tm is low-code/no-code, it's easy to customize the platform to fit each business scenario, and your finance team gains a clean cost-to-value line as usage rises or falls.

Sys.tm: *KMWorld* Trend-Setting Product of 2025



Sys.tm[®] recognized as a *KMWorld* Trend-Setting Product of 2025

KMWorld's Trend-Setting Product list includes companies that are thinking beyond simply embedding technologies like Artificial Intelligence (AI) into their products, and who instead are innovating the ways they do so to have real impact for consumers. *KMWorld* called out Sys.tm's unique composable platform, which includes information management and security, AI, Robotic Process Automation (RPA), and process automation within one user environment.



“Now that AI is an accepted piece of the technology pie, innovative uses of it are what makes a product trend-setting. ...*KMWorld*'s Trend-Setting Product list of 2025 is composed of the contribution of forward-thinking vendors that are leading the way in innovation. Sys.tm provides all of the power of the world's best information management, AI, and automation in an easy-to-setup, easy-to-use product.”¹⁴

– *KM World*

14: Retrieved from: "[Sys.tm Recognized as a *KMWorld* Trend-Setting Product of 2025](https://www.digitechsystems.com/sys-tm-recognized-as-a-kmworld-trend-setting-products-of-2025/)" Retrieved from: <https://www.digitechsystems.com/sys-tm-recognized-as-a-kmworld-trend-setting-products-of-2025/>

Conclusion

Contact us today to learn more about composable technology for your business!

www.digitechsystems.com/products/microservices

866.374.3569 — info@digitechsystems.com



Composable technology empowers organizations to stay agile, scale efficiently, and align technology investment with real business needs - turning flexibility and responsiveness into a lasting competitive advantage. Reach out, if you'd like to learn more about composable technology or any of the intelligent information and automation solutions Digitech Systems provides.



About Digitech Systems

A Trusted Leader in Information Management for Over 28 Years

Digitech Systems is the most trusted choice for intelligent information management and business process automation. Preferred by thousands of businesses worldwide from global conglomerates to Main Street, teams count on Digitech Systems to pave the path to more meaningful work by transforming how they handle digital files, processes, documents and more.

Celebrated by industry analysts and insiders for creating the best enterprise content management and workflow solutions on the market, Digitech Systems has an unsurpassed legacy of accelerating business performance by streamlining digital processes for organizations of any size with the PaperVision® and ImageSilo® brands. For decades, Digitech Systems' technologies have kept their customers on the knowledge management leading edge. To learn more about Digitech Systems and their award-winning suite of information management, Sys.tm®, Artificial Intelligence (AI), Business Process Management (BPM), electronic forms, and Robotic Process Automation (RPA) technologies, visit www.digitechsystems.com.

Contact Us:

Sales:

866.374.3569
salesupport@digitechsystems.com

Support:

Support hours: 8 AM - 6 PM CST/CDT
877.374.3569
support@digitechsystems.com

Professional Services:

855.374.3569
services@digitechps.com

Corporate Headquarters:

8400 E. Crescent Parkway, Suite 500
Greenwood Village, CO 80111
Phone: 303.493.6900
International: +1.303.493.6900